

# Revolutionizing B2B Telco Installations with Pega Blueprint

**Kurt Van de Moortele**

Quote-to-Provisioning Tribe Lead

**Proximus**

**Laura Hollevoet**

B2B Customer Experience Manager

**Proximus**

**Jiri Brezovsky**

Client Innovation Regional Director

**Pega**



# The Proximus Group: a wide range of local and global services

International company with Belgian roots and 90+ years of history

10,000+ employees (FTE's) in Belgium and many indirect jobs

Listed on Euronext Brussels (PROX)

€6.0 billion revenues (2023 Group underlying revenues)

€1.7 billion EBITDA (2023 Group underlying EBITDA)

€1.3 billion investments (2023 Capex excl. spectrum and football rights)



***“Boldly building a connected world that people trust so society blooms”***



# Proximus and Pega

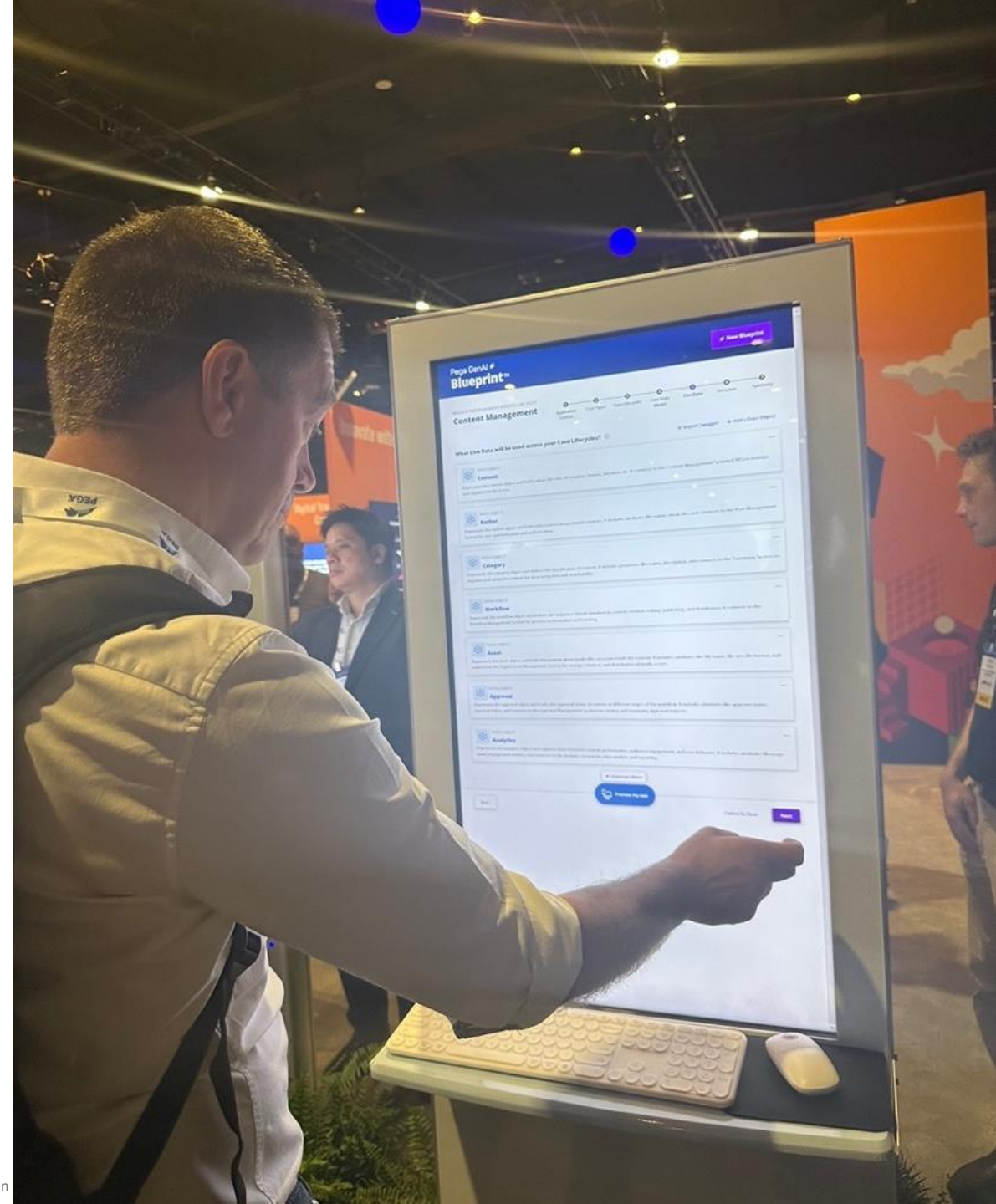
One year ago...





# The new journey with Blueprint started at PegaWorld 2024

Kurt creating his first blueprint →

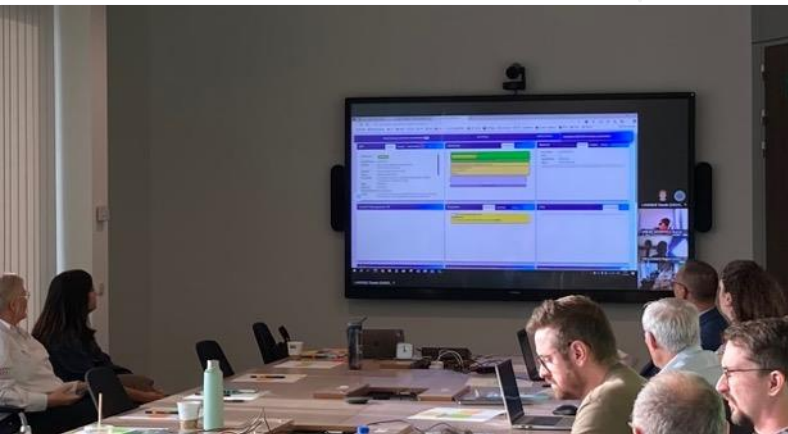


# Reimagining the future of COFU with Pega Blueprint

June 2025



# How COFU works today



**COFU**  
monitoring  
tool

**X**

**Limited process**  
orchestration  
and collaboration  
capabilities

**X**

**Manual workload**  
management and  
allocation

**X**

**Lack of guidance**  
when updating  
systems of record

## SEGMENTS



- Corporate
- Medium-sized Business

## ROLES



- Customer
- Customer Service (CSC)
- Technician
- Back Office (Dispatcher)

## PRODUCTS



- Limited order types support
- Professional Market Products







# Workshop agenda

Zooming out first, then back in

## AM ALIGNING

**Strategic Alignment:** creating a shared strategic understanding of the long-term goals and obstacles that stand in the way.

**Mapping the Future State:** agreeing a high-level, end-to-end future state vision.

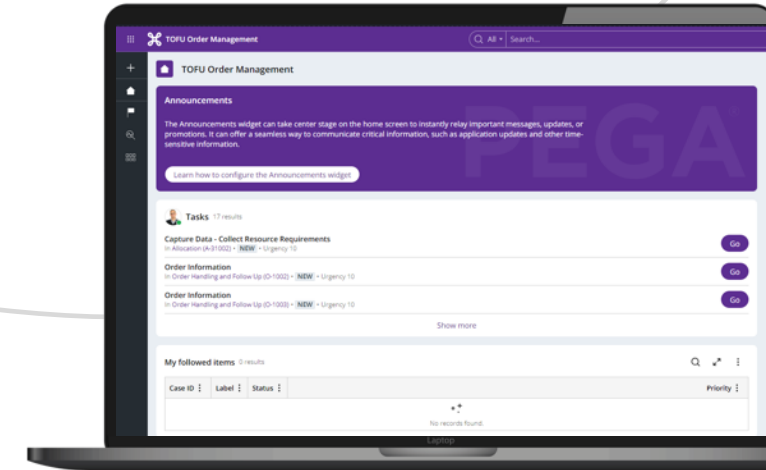
**Building the Future State:** experimenting with Pega GenAI Blueprint™.



Future vision



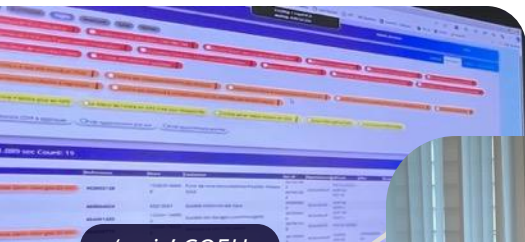
Rapid prototype



Strategy



Coordination



'as is' COFU



Execution



To-be' Blueprint

## PM CREATING

**Rapid prototyping:** Demonstrating transition from future-state vision to accelerated Pega implementation.

**Transformation Roadmap:** defining high-level transformation phases and go-live success criteria.

**Next Steps:** wrap up, reflections, Q&A.



# Participant feedback

Pega seems like **a good opportunity to replace COFU.**

 Operational Manager

I liked the **layered approach**: operational, tactical, strategic.

 ACN Domain Manager

[They] clearly know how to run such a workshop. **I got very good feedback from the participants.**

 Product Owner Lead, IT

I found the morning session very good to **get everyone aligned** and with the noses in the same direction.

 Operational Battle Owner

Very good session! **Goal has been met**, meaning we needed to be all on the same page which was definitely the case.

 Product Owner Lead

[I enjoyed] reflecting on several company divisions **to develop a common tool.**

 Expert Service Support



*Collaboration and openness of the participants – love it!*

– Laura



# 2-year vision for COFU

Transform collaboration between CSCs and internal stakeholders to **enhance planning efficiency, provide comprehensive insights for proactive actions and operational excellence and improve customer onboarding** during product delivery and installation, **delivering 'customer delight'.**

## KEY ENABLERS

1

### 360° visibility

One-stop shop for CSC employees to manage orders, simplifying cross-tool tasks.

2

### Workload management

See at-a-glance work order assignments and prioritization based on SLA's.

3

### End-to-end orchestration

Use automation and AI to streamline workflows and prioritise CSC employees for exceptions.



# Turning vision into a solution prototype

In just a few hours



1

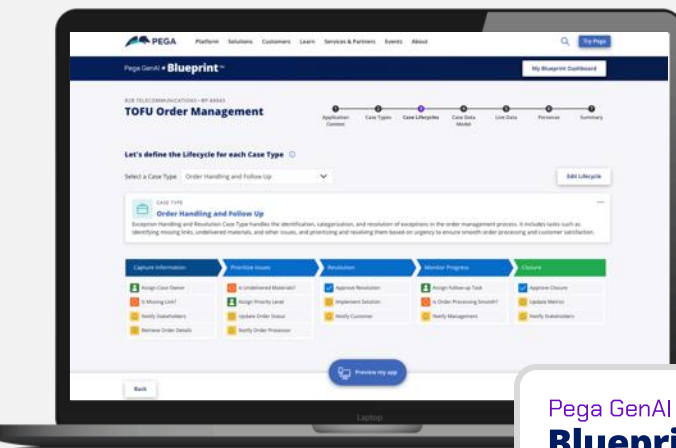
Created an application  
Blueprint with GenAI. **15 MINS**

2

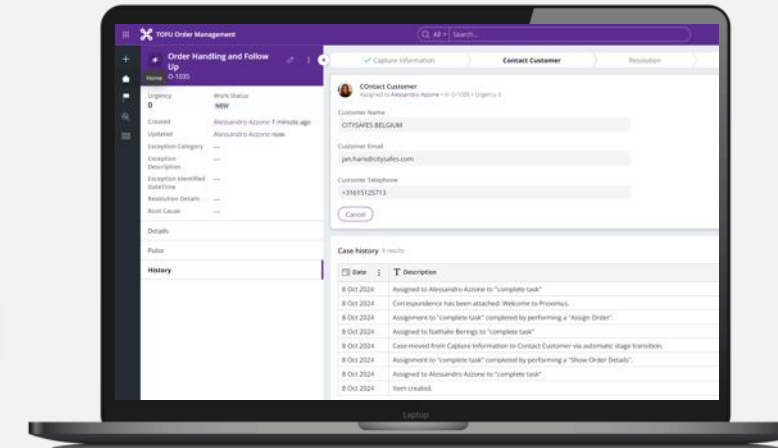
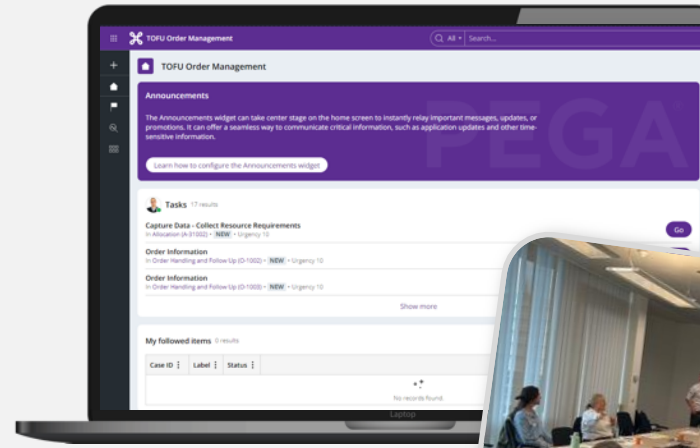
Refined the Blueprint to create  
an accelerated solution. **75 MINS**

3

Instantly seeing a working solution  
that can be refined further. **REAL-TIME**



Pega GenAI   
**Blueprint™**



*360° visibility, Workload management & End-to-end orchestration.*

BP-88843

## TOFU Order Management



Which industry is your application for? ⓘ



Banking



Communications



Consumer Services



Cross Industry (e.g. HR, IT, Finance, etc.)



Energy & Utilities



Government



Healthcare



Insurance



Manufacturing



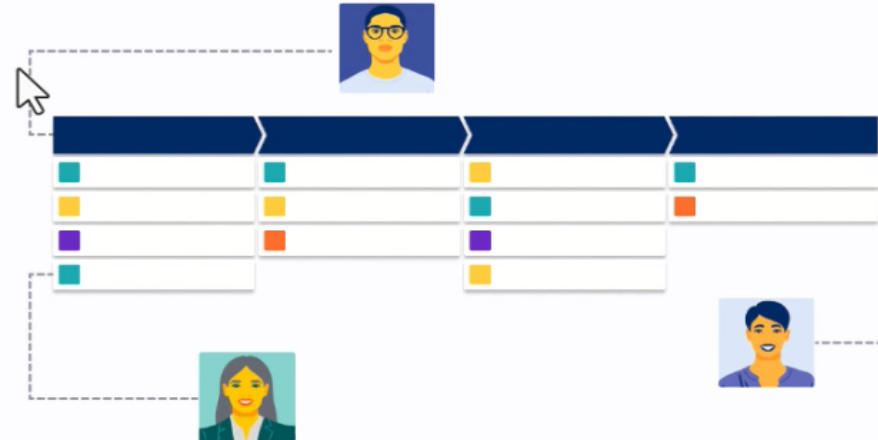
Transportation & Logistics



Just for fun



Other



 Upload supporting document

Back

Cancel

Next



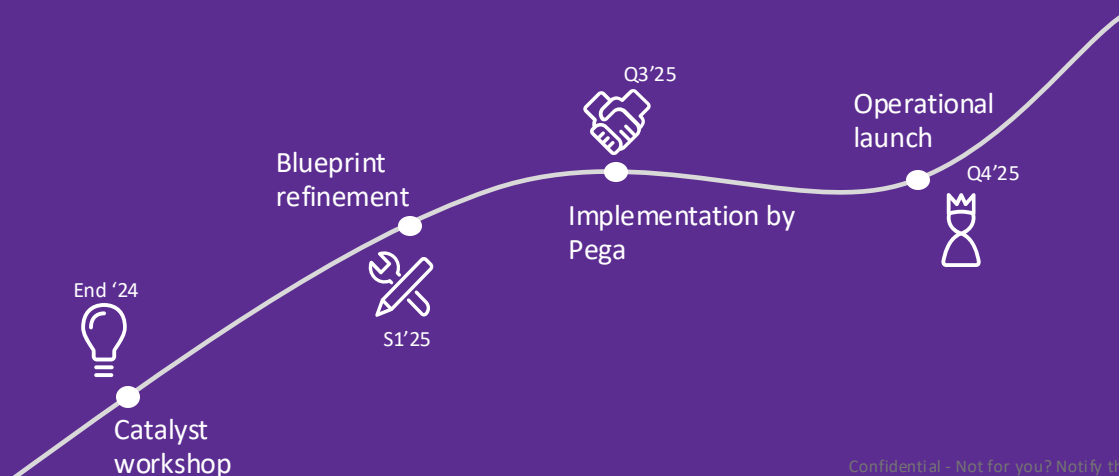
# Key takeaways

## 1. Automate workflows for efficiency

Even manual tasks can be organized automatically. For instance, in our corporate B2B appointment follow-up, which represents only 10% of Proximus SA's order volumes, we found that structuring these tasks significantly reduces wasted time.

## 2. Engage your team with Pega Blueprint

You can create prototype applications in just 15 minutes using Pega Blueprint, enabling quick and efficient development. Encourage your process resources to experiment and play with Pega Blueprint to enhance their understanding and improve process management.



# Thank You

More info?

[laura.hollevoet@proximus.com](mailto:laura.hollevoet@proximus.com) or [kurt.van.de.moortele@proximus.com](mailto:kurt.van.de.moortele@proximus.com)







# PegaWorld

JUNE 1-3, 2025 | LAS VEGAS

