



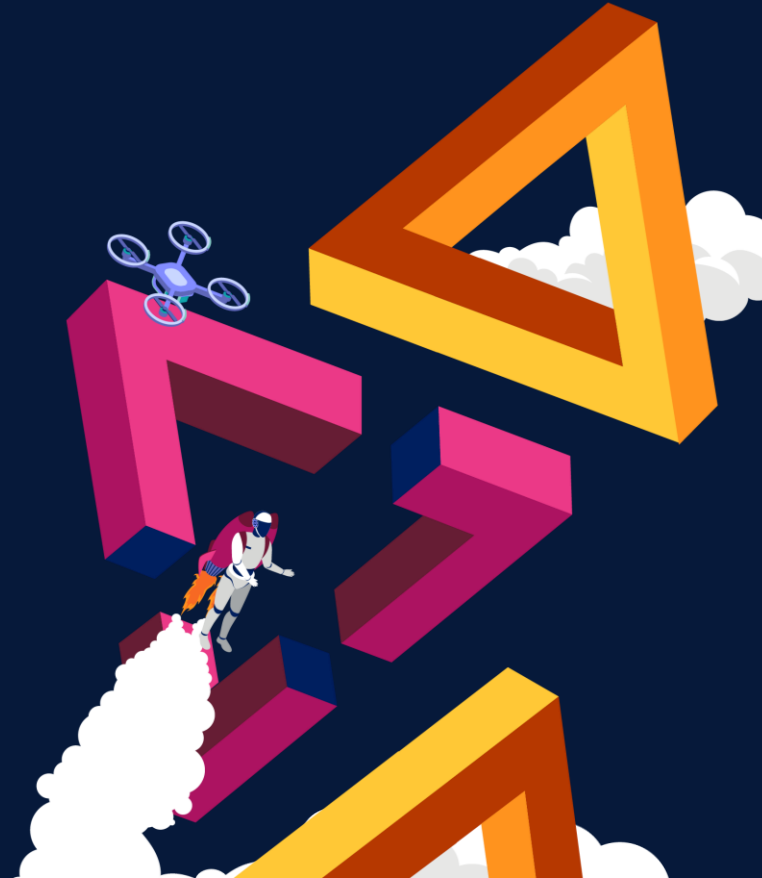
PegaWorld

JUNE 1-3, 2025 | LAS VEGAS

Information shared during PegaWorld is not an offer or commitment by Pegasystems and does not create any legal obligation for Pegasystems, including to deliver any material, code, or functionality. The timing of the development and release of any features or functionality described about our products remains at our sole discretion. ©2025 Pegasystems Inc.

Prime Therapeutics

Maximizing ROI by Migrating to Pega Cloud





Keith Harvego

Prime Therapeutics
IT Manager, Platform
Integrations

19 years at Prime

Favorite Casino Game: Slots

Sports Favorite: Vikings



Hetal Dave

Prime Therapeutics
Senior Principal Architect

6 years at Prime

Favorite Casino Game: Roulette

Sports Favorite: Chiefs



Eric Ryan

Pegasystems
Principal Solutions Architect

15 years at Pega

Favorite Casino Game: Pai Gao

Sports Favorite: Patriots

Prime's Pega Cloud Journey

Introducing
Prime
Therapeutics

Prime's
Business Case

Maximizing ROI

The Migration
Experience

Migration of 12
applications

Top 5
Suggestions

Prime Therapeutics

Reimagining pharmacy solutions to provide the care we want for our loved ones.

- Designed by health plans for health plans, we provide an innovative pharmacy benefit manager (PBM) partnership experience.
- Prime Therapeutics (Prime) is a trusted, truly transparent pharmacy solutions partner delivering savings, simplicity and support to our customers and members.
- Our 7,000+ dedicated employees are committed to challenging norms and curating innovative pharmacy solutions that simplify the complex and provide exceptional experiences for millions of people across the nation.

\$422

Average savings on medical costs per member per year.



Lower drug costs



Holistic Specialty Solutions



Better Experience & Outcomes

Why Pega Cloud?

Pre-ELA without Pega Cloud

Post-ELA with Pega Cloud

Modern Licensing Structure



8 separate licenses
Multiple amendments
Multiple license scopes
Outdated agreements

Single agreement
Predictable pricing

Reduced IT Complexity



Windows/AIX/Linux/Tanzu
IBM Power/Cisco UCS
Hitachi, Dell (storage)
Websphere/JBoss/Kubernetes
DB2, SQL Server
5 Pega Versions
Complex patching=Downtime

Managed service on modern
architecture

Migration Experience



Application Profiles

PCR

Tier 1
Pega Platform

Built on Pega Cloud

 100 Users

 5 Integrations


GO-LIVE:
Feb 10, 2025

P360

Tier 2
Pega Platform

6 years old

 100 Users

 15 Integrations

GO-LIVE:
Sept 28, 2024

Drug IQ

Tier 1
**Pega Platform
Robotics**

6 years old

 100 Users

 5 Integrations

GO-LIVE:
Sept 21, 2024

Unity

Tier 1
**Customer Service
for Healthcare**

5 years old

 800 Agents

 20 Integrations

GO-LIVE:
Dec 8, 2024

Application Profiles

Provider Credentialing

Tier 3
Pega Platform

3 years old

 20 Users

 5 Integrations

GO-LIVE:
Nov 22, 2024

Benefits and Coverage

Tier 2
Pega Platform

6 years old

 50 Users

 4 Integrations

GO-LIVE:
Dec 13, 2024

NCS

Tier 1
Pega Platform

6 years old

 100 Users

 5 Integrations

GO-LIVE:
Dec 14, 2024

Translate Rx

Tier 3
Pega Platform

6 years old

 150 Users

 2 Integrations

GO-LIVE:
May 10, 2025

Application Profiles

CORE

Tier 1

Pega Platform

6+ years old



2000 Users



97 Integrations

GO-LIVE:

In process June 2025

Single Intake

Tier 1

Pega Platform

10+ years old



100 Users



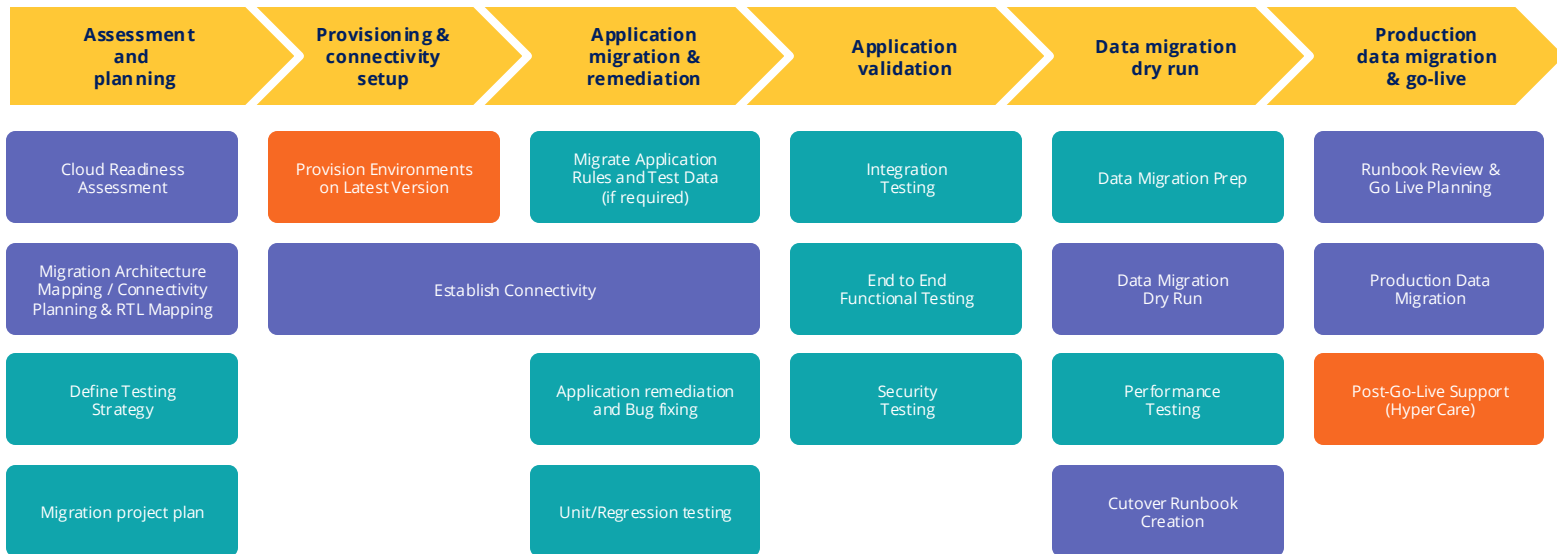
48 Integrations

GO-LIVE:

In process June 2025

Pega Cloud Migration Journey

Stages and steps migrating Prime's apps



- Client responsibility
- Pega/Client responsibility
- Pega responsibility



Cloud Assessment Methodology

- Cloud Environment Assessment
- Cloud Readiness Tools
- Integrations List, Reports List, Process Flow List, technical requirements

Technical Assessment

- Compile findings; Draft Assessment Report
- Architecture Map
- Draft Scope Statement, Estimate

Compile Findings



Visioning Session

- Interviews and workshops to understand institutional strategies and current operating model.

Functional Assessment

- Assessment sessions for a deeper look at Functional processes tied to technical dependencies such as integrations, process flows etc.
- Connectivity or security requirements

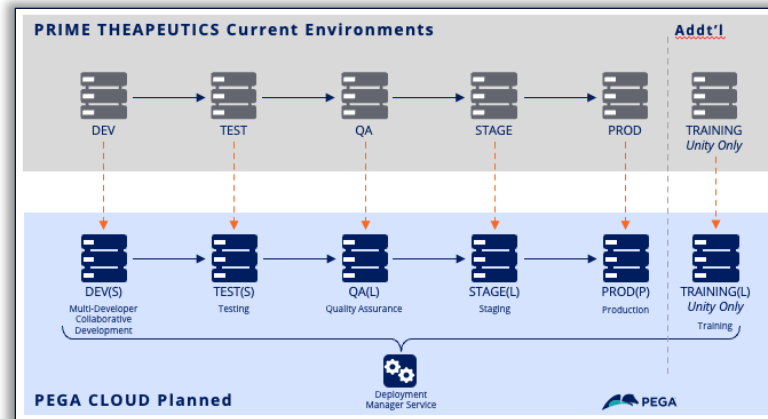
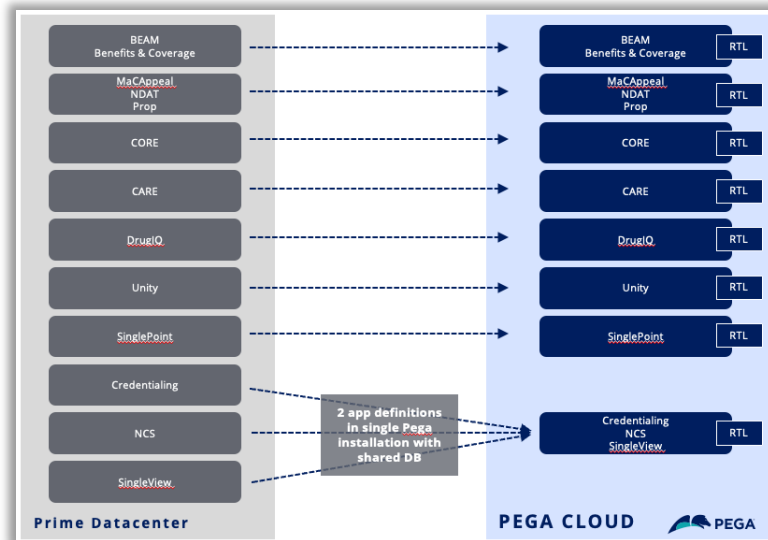
Estimate and Contract

- Review Assessment Report
- Scope Statement or Estimate

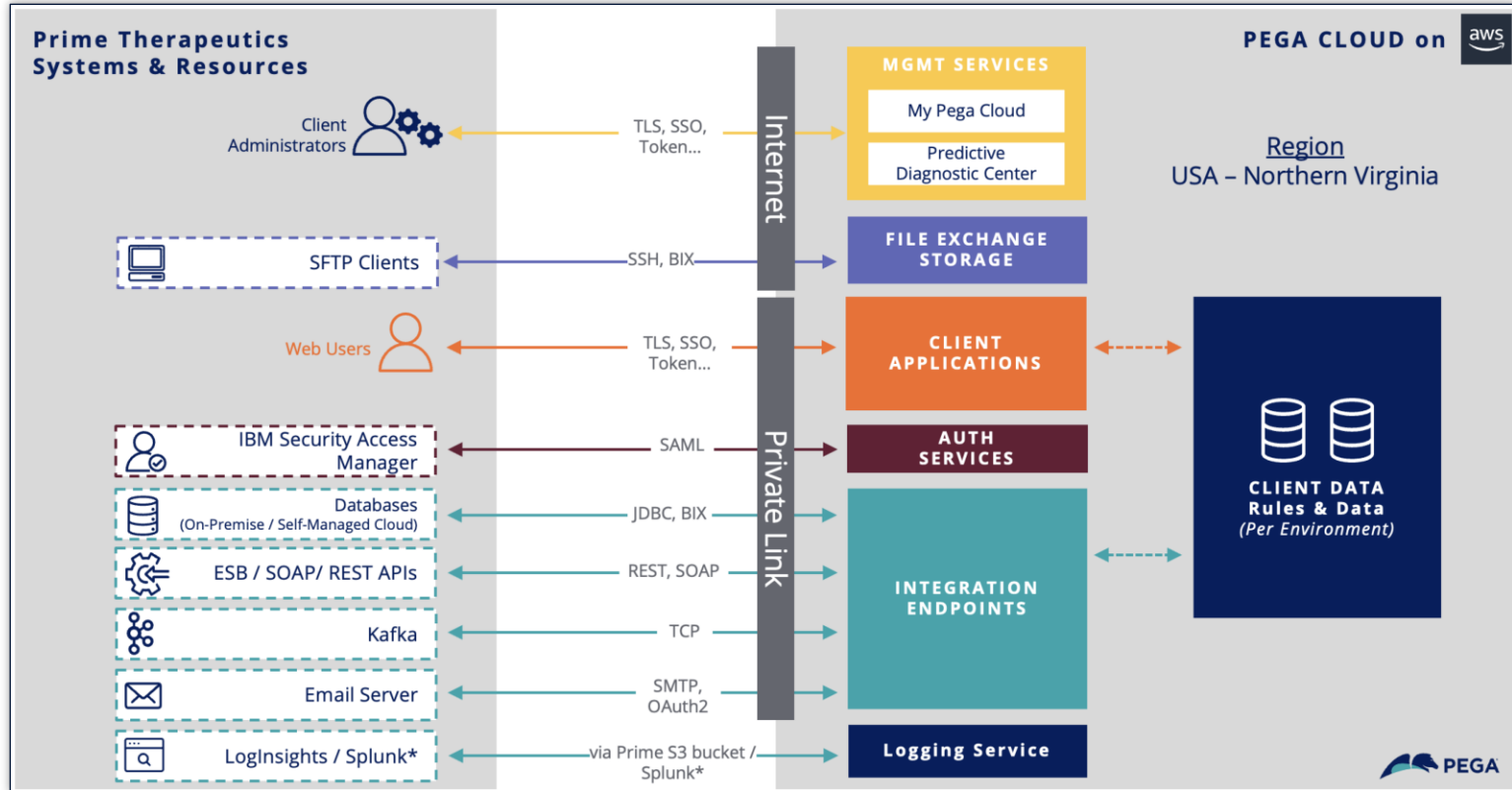
Environments Plan

Mapping on-premise to Pega Cloud

- Decision Drivers
 - App Profiles
 - SDLC Practices
 - Time Constraints
- SDLC replicated

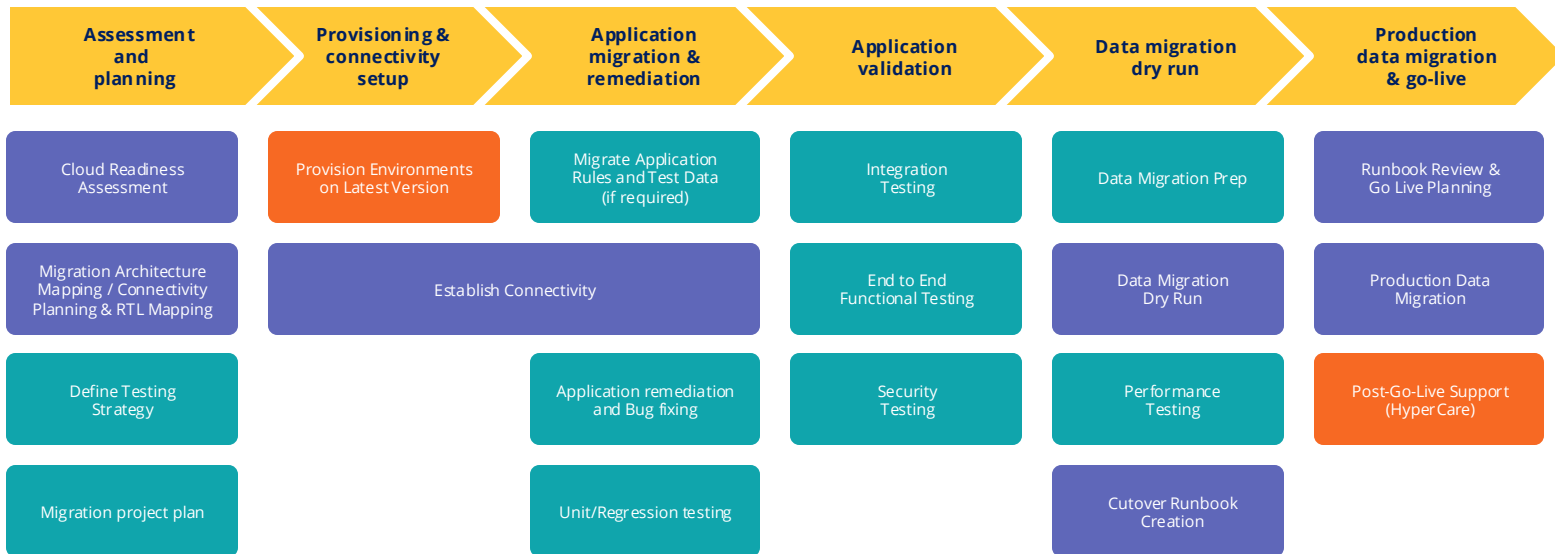


Connectivity



Pega Cloud Migration Journey

Stages and steps migrating Prime's apps



- Client responsibility
- Pega/Client responsibility
- Pega responsibility



Top 5 Recommendations



Partnership



Upgrade



Test



Document New
Processes



Detailed
Migration Plan

Get More Details...

Innovation Hub



**Accelerate to Pega's as
a Service Experience**



**Operational Excellence:
Run Smarter in Pega
Cloud**



**Pega Cloud Exclusive
Services**





PegaWorld

JUNE 1-3, 2025 | LAS VEGAS



PEGAWORLD.COM