



Powering Transformation:

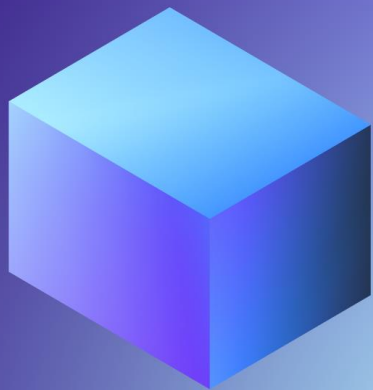
How AWS and Pega Enable Businesses to Extract Real Value by Deploying
Generative AI Responsibly

Daniel Aucoin, Sr. Partner Solutions Architect

aucoind@amazon.com

Anubhav Sharma, Principal ISV Solutions Architect

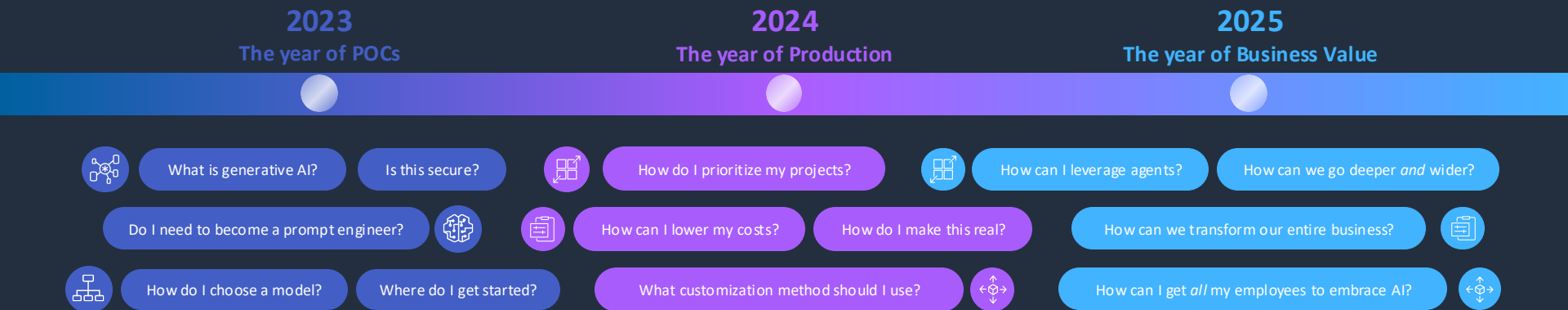
shaanubh@amazon.com



Agenda

- Innovation opportunities
- Data is your differentiator
- How Pega uses AWS for Responsible, Secure Generative AI
- What's next?

Generative AI: Trends through the years



Innovation opportunities



Generative AI has potential to create significant business value



NEW EXPERIENCES

Create new innovative and engaging ways of interacting with your customers and employees



PRODUCTIVITY

Radically improve productivity across all lines of business



INSIGHTS

Extract insights and clear answers from all your corporate information, enabling faster and better decisions



CREATIVITY

Create new content and ideas, including conversations, stories, images, videos, and music

Industry-specific Generative AI use cases

Healthcare & Life Sciences

Ambient
digital scribe

Medical
imaging

Drug
discovery

Enhance
clinical trials

Research
reporting

Industrial & Manufacturing

Product
design

Operational
efficiency

Maintenance
Assistants

Supply chain optimization

Equipment
diagnostics

Financial Services

Portfolio
management

Financial
documentation

Intelligent
advisory

Fraud
detection

Compliance
assistant

Retail

Pricing
optimization

Virtual try-ons
review

Marketing
Optimization

Product
descriptions

Pers.
Recommendations

Media & Entertainment

HQ content
at scale

Enrich broadcast content

Automated content
tagging

Optimize
subscriber experience

Automated
highlights gen.





Nasdaq

Tackling insider dealing

NASDAQ leverages generative AI with Amazon Bedrock to enhance global market surveillance

CHALLENGE

Nasdaq needed to help clients more effectively monitor and detect potential market abuse. They wanted to enhance the quality, speed, and efficiency of market abuse investigations performed by clients.

SOLUTION

Nasdaq leverages Amazon Bedrock to create new kinds of intelligence reports for investors and corporate customers that leverage the company's proprietary data sets and drive faster, more impactful content creation in Nasdaq's marketing and communication teams. Nasdaq uses generative AI to expand its portfolio of financial Software as a Service (SaaS) products for identifying financial crime risks. [Learn more.](#)

OUTCOMES

- Cuts investigation time by 33%

FINANCIAL SERVICES

ENTERPRISE

NAMER

USA

AMAZON BEDROCK

Data is your differentiator





Generative AI Application



Generative AI Application

Data Foundation

WORKFLOWS

STORAGE

GOVERNANCE
& COMPLIANCE

DATABASES,
ANALYTICS,
& DATA LAKES

DATA INTEGRATION



Make generative AI work
with **your data**



RETRIEVAL-AUGMENTED GENERATION (RAG)

Specialized knowledge through prompt augmentation

Enterprise knowledge corpus

No change to the foundation model



FINE-TUNING

Specialized knowledge for specific tasks

Small number of labeled examples

Change a copy of the foundation model



CONTINUED PRE-TRAINING

Generalized and specialized knowledge for your domain

Unlabeled, unstructured enterprise data

Change a copy of the foundation model

Security at the foundation



Security Considerations for Generative AI

COMPLIANCE & GOVERNANCE

The policies, procedures, and reporting needed to empower the business while minimizing risk

--

Create generative AI usage guidelines

Establish process for output validation

Develop monitoring & reporting processes

LEGAL & PRIVACY

The specific regulatory, legal, and privacy requirements for using or creating generative AI solutions.

--

Retain control of your data

Encrypt data in transit and at rest

Support regulatory standards

CONTROLS

The implementation of security controls that are used to mitigate risk.

--

Human-in-the-loop

Explainability & auditability

Testing strategy

Identity and access management

RISK MANAGEMENT

Identification of potential threats to generative AI solutions and recommended mitigations.

--

Threat modeling

Third-party risk assessments

Ownership of data, including prompts and responses

RESILIENCE

How to architect generative AI solutions to maintain availability and meet business SLAs.

--

Data management strategy

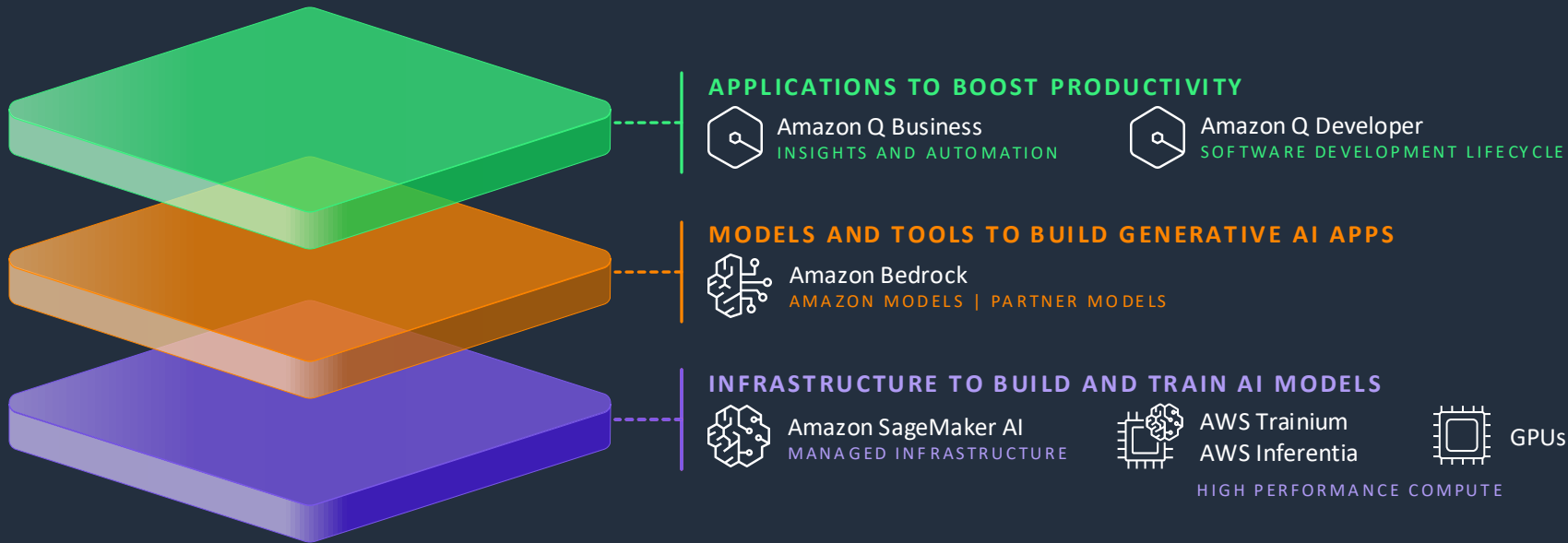
Availability

High Availability and Disaster Recovery strategy

Amazon Bedrock



AWS Generative AI Stack



Amazon Bedrock

The easiest way to build and scale
generative AI applications with
foundation models (FMs)

Choice of leading FMs through a single API

Model customization

Retrieval Augmented Generation (RAG)

Agents that execute multistep tasks

Security, privacy, and safety







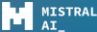


Amazon Bedrock keeps data secure & private



- None of the customer's data is used to train the underlying foundational models.
- All data is encrypted at rest using AWS KMS and encrypted in transit with TLS 1.2 (minimum). Also supports Amazon Managed keys or Customer-Managed Keys (CMKs).
- Fine-tuned models are encrypted and stored using customer AWS KMS key. Only you have access to your customized models.
- Data used to customize models remains within your VPC.
- Integration with IAM for fine-grained access controls, and GuardDuty for threat detection.
- Support for data privacy standards, including GDPR, HIPAA, and PCI
- SOC 1, 2, 3 Compliant

Amazon Bedrock

BROAD CHOICE OF MODELS

 Effective reasoning & rapid analysis for long context windows JAMBA	 Frontier multimodal intelligence at low-latency, Agent & RAG Applications, high-quality image & video generation AMAZON NOVA	 Advanced reasoning & coding capabilities, including computer use skills CLAUDE	 Multimodal search & advanced retrieval powering multilingual knowledge agents COMMAND EMBED RERANK	 High-quality video generation from text & images LUMARAY 2	 Advanced image & language reasoning LLAMA	 Knowledge summarization, expert agents, & code completion MISTRAL MIXTRAL	 Software engineering AI for large enterprises MALBU POINT	 High-quality AI image generation, easily deployable at scale STABLEDIFFUSION STABLEIMAGE
---	--	--	--	---	---	---	---	--

Coming soon

Amazon Bedrock Marketplace enables developers to discover, test, and use over 100 popular, emerging, and specialized foundation models (FMs) alongside the current selection of industry-leading models in Amazon Bedrock.

Responsible AI builds trust



Responsible AI Dimensions

FAIRNESS

Considering impacts on different groups of stakeholders

EXPLAINABILITY

Understanding and evaluating system outputs

CONTROLLABILITY

Having mechanisms to monitor and steer AI system behavior

SAFETY

Preventing harmful system output and misuse

PRIVACY & SECURITY

Appropriately obtaining, using and protecting data and models

GOVERNANCE

Incorporating best practices into the AI supply chain, including providers and deployers

TRANSPARENCY

Enabling stakeholders to make informed choices about their engagement with an AI system

VERACITY & ROBUSTNESS

Achieving correct system outputs, even with unexpected or adversarial inputs



European Parliament

European Parliament

BRINGING HISTORY TO LIFE

European Parliament used Anthropic's Claude on Amazon Bedrock to use AI in a controlled and responsible way and launch Archibot, making over 2 million documents accessible

CHALLENGE

The European Parliament wanted to make millions of official documents in paper archives accessible to researchers, policymakers, educators, and the public.

SOLUTION

They built Archibot, a sophisticated AI assistant to offer users worldwide easy access to EU Parliament documents in multiple languages - including resolutions, positions, policies, and inter-institutional negotiations - while also helping researchers and staff analyze data and create comprehensive reports. The project showcases how generative AI can be used by governments to enhance transparency and accessibility for citizens. What once required deep searches into the EU's physical archives is now available instantly, bringing the story of European democracy to life for citizens everywhere. [Learn more.](#)

OUTCOMES

- Made over 2 million documents accessible

GOVERNMENT

ENTERPRISE

EMEA

FRANCE

AMAZON BEDROCK

Responsible AI: Best practices



Put your people first



Assess risk on a (use) case-by-case basis



Iterate across the AI lifecycle

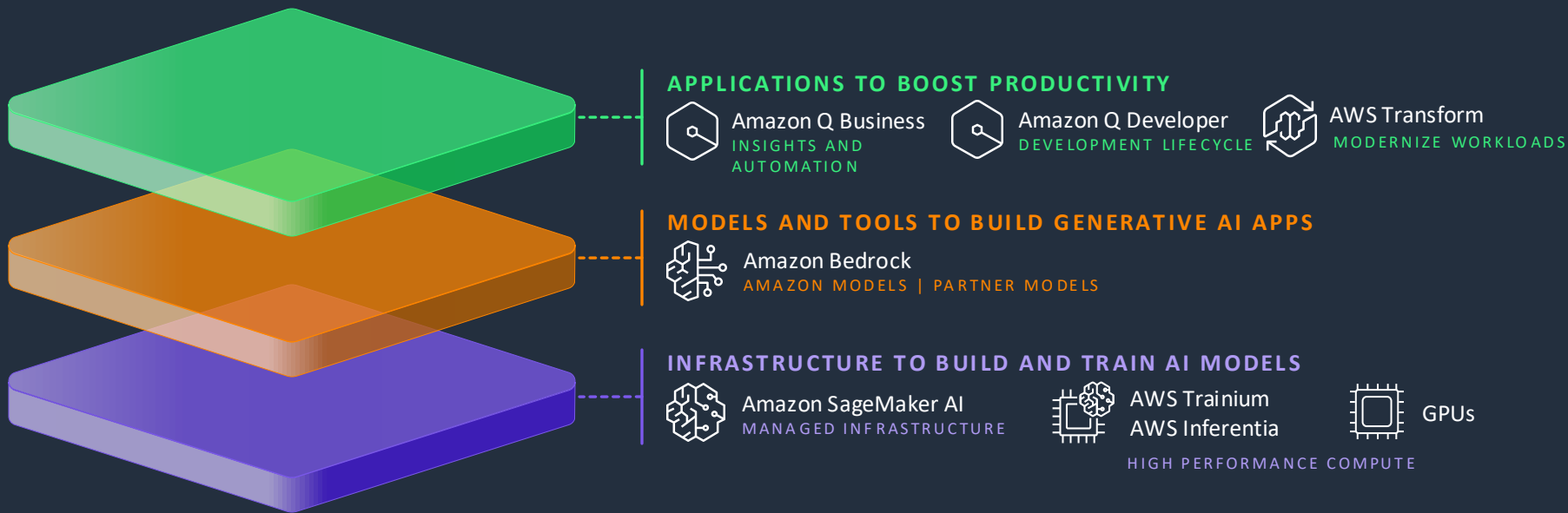


Test, test again, and then test again

AWS Transform for Mainframe



AWS Generative AI Stack



State of enterprise workload transformation

70%

of workloads
still on premises

Gartner

70%

of legacy IT software for
Fortune 500 companies
written 20+ years ago

McKinsey

1.5 years

average time to
complete a migration ^{ISG}

Research

Enterprises face many transformation challenges...



Slow transformation

Complex legacy systems
Labor-intensive processes
Limited resources



Limited scalability

Sequential processes
Limited collaboration
Monolith systems that resist modular change

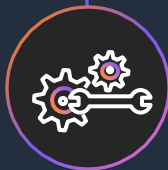


Scarcity of expertise

Shrinking pool of legacy system experts
Specialized hybrid skills requirement

AWS Transform agent for mainframe

The first agentic AI service for
modernizing mainframe workloads



Automate the entire transformation process—
from initial analysis and planning to code
refactoring and migration



Reduce mainframe modernization
timelines from years to months



Analyze millions of lines of COBOL



Generate comprehensive documentation, and
code analysis in minutes



Toyota Motors North America

CHALLENGES

- Key business logic trapped in thousands of legacy programs
- Shrinking mainframe skills pool
- Direct Model usage did not yield better results
- 18,000 MIPS
- 40M+ lines of COBOL code

SOLUTIONS

- Leverage AWS Transform to perform
- Analyze tasks with agents, identify missing components and prepare a stable code base for modernization
- Create domains and plant seeds for decomposition
- Generate XML and PDF detailed documentation
- Leverage Amazon Q Business for Chat assistance on Documentation

RESULTS

More than 50% faster Mainframe modernization

Application discovery and planning accelerated by 75%

Reduced application domain knowledge extraction efforts from months to hours and 90% acceleration

Decomposing monolithic application into business domains with simple user inputs

“ AWS Transform has been a revolutionary solution for us. The powerful documentation, code analysis, and decomposition capabilities provided by AWS give us a clearer understanding of our application landscape. We’re able to generate detailed documentation of hundreds of COBOL modules, including context-aware information and persona-driven insights, in less than a day. AWS Transform has done what many said was impossible.

Brian Kursar, CTO Toyota Motor North America

CUSTOMER PROFILE



TOYOTA

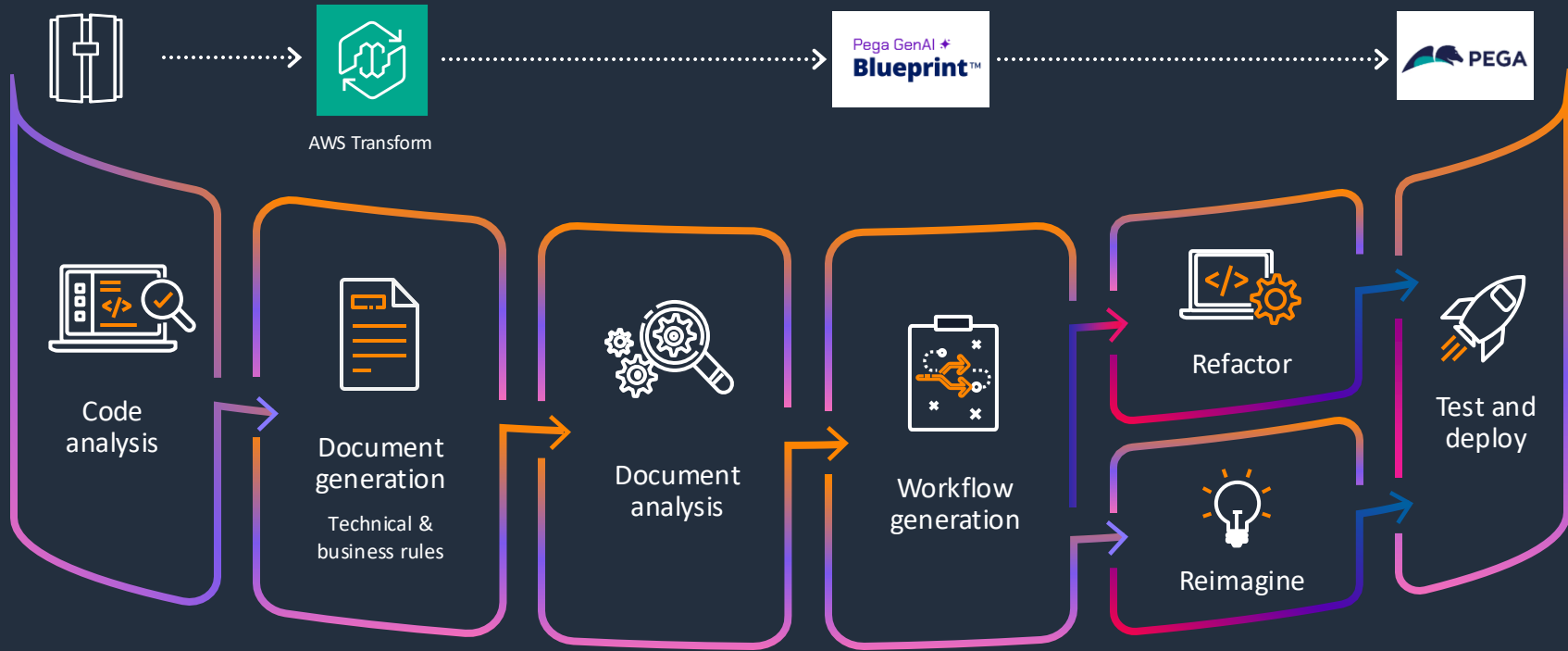
INDUSTRY
Automotive

REGION
Global

Toyota (NYSE:TM) has been a part of the cultural fabric in the U.S. for nearly 70 years, and is committed to advancing sustainable, next-generation mobility through our Toyota and Lexus brands, plus our nearly 1,500 dealerships. Toyota directly employs nearly 48,000 people in the U.S. who have contributed to the design, engineering, and assembly of more than 35 million cars and trucks at our 11 manufacturing plants.



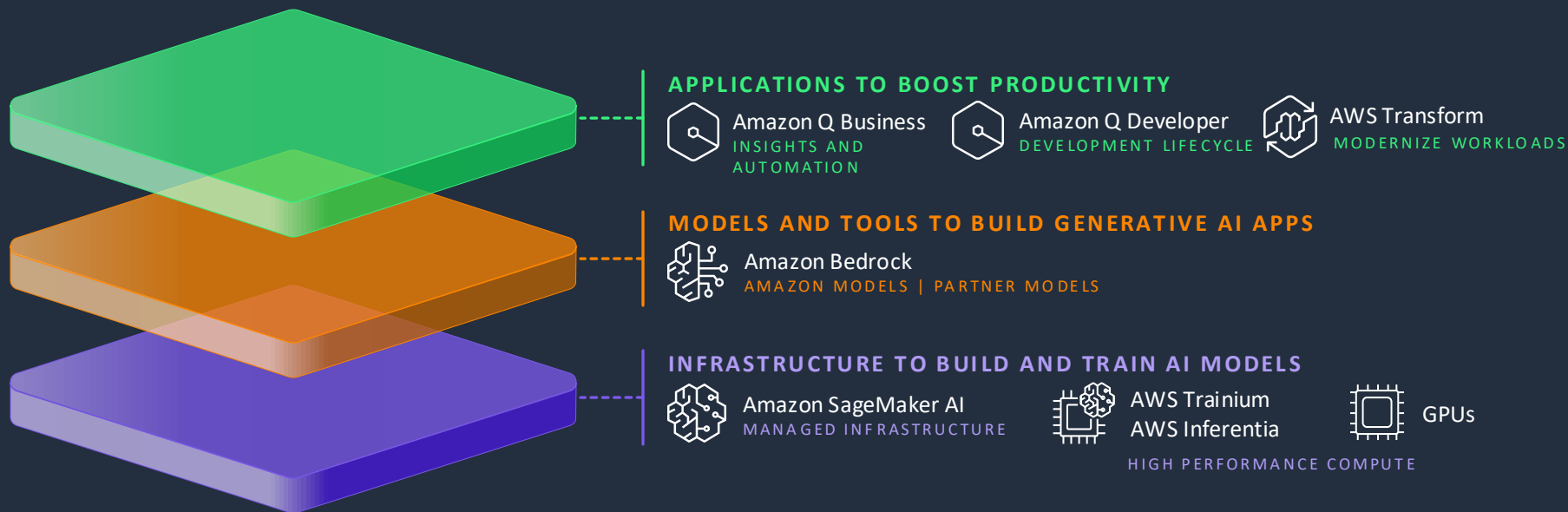
Mainframe Modernization with AWS Transform and Pega



Q Business Index



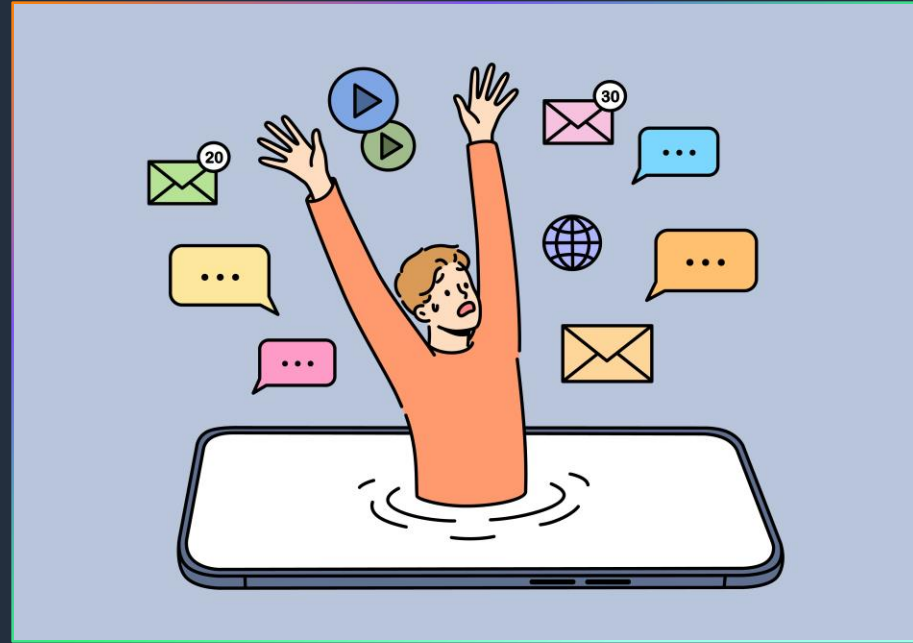
AWS Generative AI Stack



The current state of “future work”

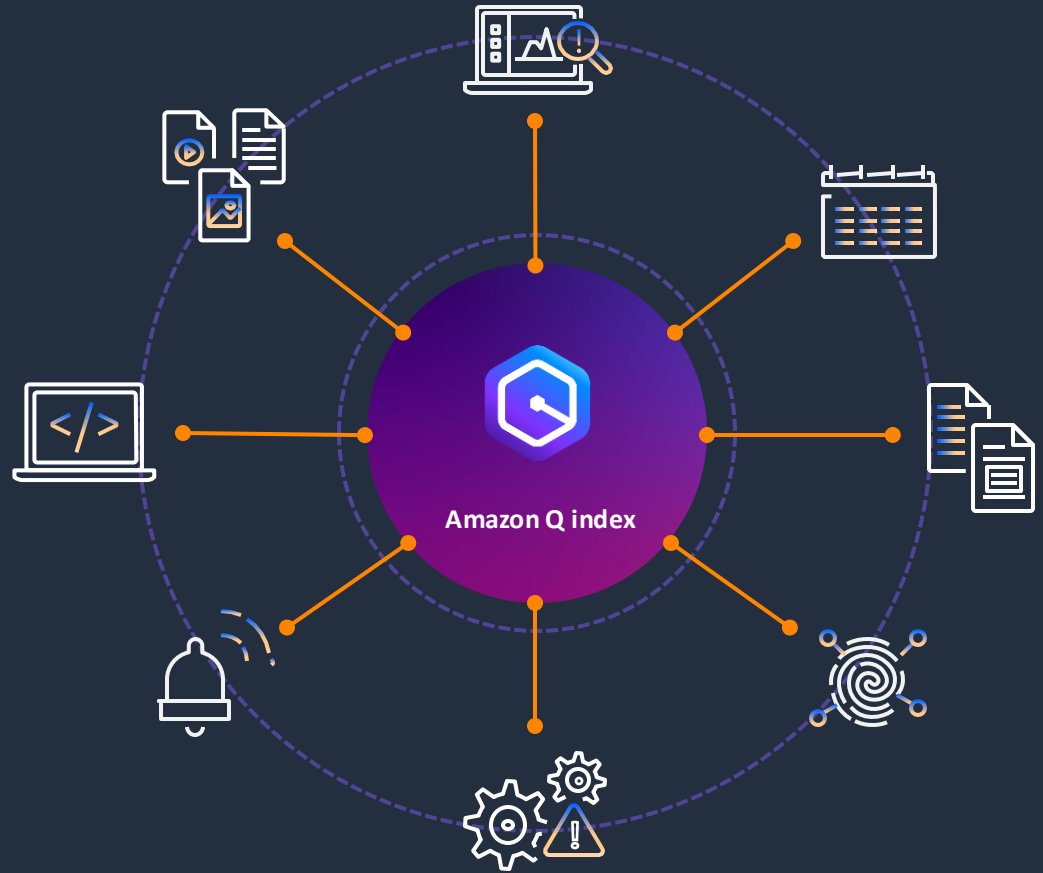
The average desk worker uses 11 applications to complete their tasks, up from just 6 in 2019.

- [Gartner](#)



Reimagining productivity

Utilize cross-app insights with Amazon Q Business Index



Amazon Q Business customers



Panasonic



SIEMENS
Ingenuity for life

COMCAST

YAHOO!
JAPAN

TRAEGER

experian.

Neiman Marcus

THOMSON REUTERS
FOUNDATION

LG CNS

Hewlett Packard
Enterprise

ZipRecruiter

Bonterra

kakao

NTT
docomo

petco

BOSCH

dafiti group

BW | Best Western
Hotels & Resorts

maximus

eightfold.ai



BriteCore

VIZIO

Orangetheory

airtel

Hapag-Lloyd

RioTinto

Insightful.Mobi



TEALUM

paytm



workiva

© 2025, Amazon Web Services, Inc. or its affiliates. All rights reserved.



Showpad



Australian
Bureau of
Statistics

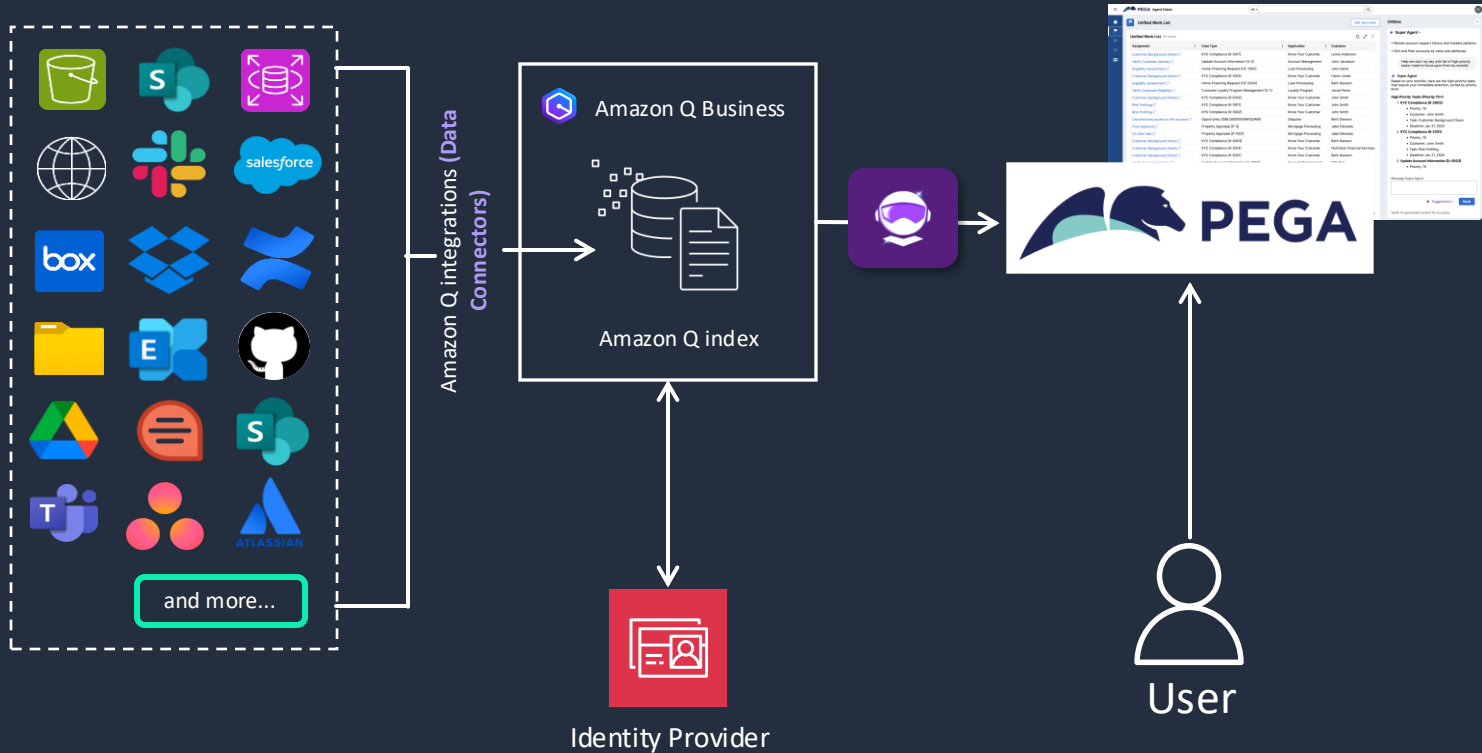
AllCloud

Alnylam

acelo

MOBLY

Enriched GenAI Experiences Using Q Business Index



What does **the future** hold for generative AI?

Agents

Multi-modal

Multiple models

AI Policies & Standards

Strategic recommendations on generative AI

EYES WIDE OPEN

- Culture of continuous experimentation
- Prevent early dependencies

FLEXIBILITY IS KEY

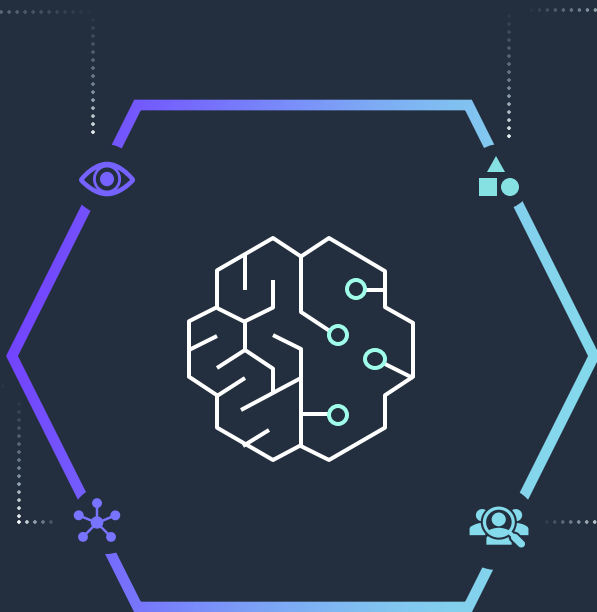
- Innovation requires flexibility free from technical or contractual lock-ins.
- Infrastructure supporting 3rd-party Generative AI integration
- A breadth of services ensures long-term flexibility and business value

NO ONE SIZE FITS ALL

- Generative AI as an enhancement – not a replacement.
- Requirements in enterprises differ based on financial resources, security needs, governance and skills.
- Evaluate buy-vs-build

LISTEN AND ENABLE

- Work backward from your customers
- Listen to your domain experts
- Enable employees with the right set of tooling





Thank you!

Daniel Aucoin, Sr. Partner Solutions Architect

aucoind@amazon.com

Anubhav, Principal ISV Solutions Architect

shaanubh@amazon.com



PegaWorld

JUNE 1-3, 2025 | LAS VEGAS



PEGAWORLD.COM