



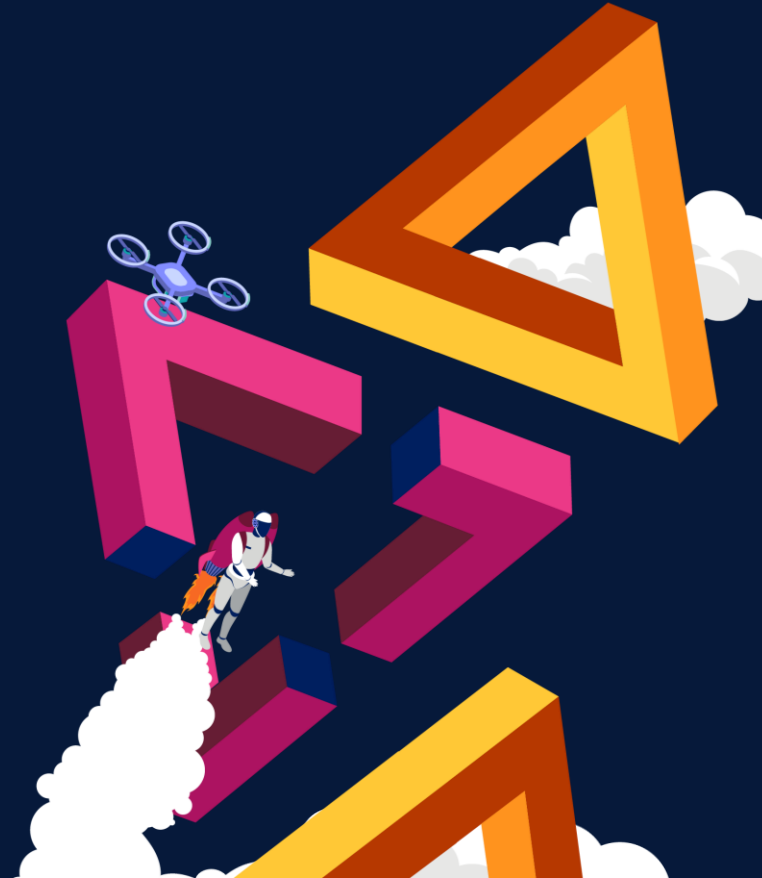
PegaWorld

JUNE 1-3, 2025 | LAS VEGAS

# Connect, Migrate, Succeed! Accelerate your Pega Cloud journey with "Cloud Secure Connect"

Grzegorz Lysko, Jakub Stando

Information shared during PegaWorld is not an offer or commitment by Pegasystems and does not create any legal obligation for Pegasystems, including to deliver any material, code, or functionality. The timing of the development and release of any features or functionality described about our products remains at our sole discretion. ©2025 Pegasystems Inc.





# Jakub Stando

Director of Product Management, Pega Cloud

- Passionate about leveraging technology to solve complex problems and drive business growth
- Lead a talented team of Product Managers
- Over a decade of experience in cloud technology and product management
- Committed to helping clients achieve their vision through innovation
- Successfully delivered high-impact Pega Cloud projects



# Accelerate innovation with Pega Cloud

Focus on real business value by shifting focus to business outcomes



Unlock the **full power of Pega** with GenAI and all of Pega's latest innovations



Deploy **dozens of changes every week** to continuously innovate



**Decrease Time to Market** with the latest solutions, proactively updated



**Focus your staff on business outcomes** while Pega manages the day-to-day



# Grzegorz Lysko

Director of Cloud Architecture

## Experience

- A decade of experience in cloud solutions design and implementation
- Expertise in scalable, reliable, and secure cloud environments



## Commitment

- Dedicated to advancing Pega Cloud with cutting-edge technologies
- Ensuring operational efficiency and reliability

## Key Contributions

- Leadership in developing Cloud 3
- Improved scalability, fault tolerance and operations



# Pega Cloud 3

## Improved scalability

*Seamless scalability, beyond even peak usage*

## Enhanced fault tolerance

*Autonomously recover and restore services*

## Independent service updates

*Increased change velocity, latest functionality and security*

## Future-proofed capabilities

*Multi-cloud (AWS, GCP), GenAI, Enhanced DR and more*

## State-of-the-art delivery

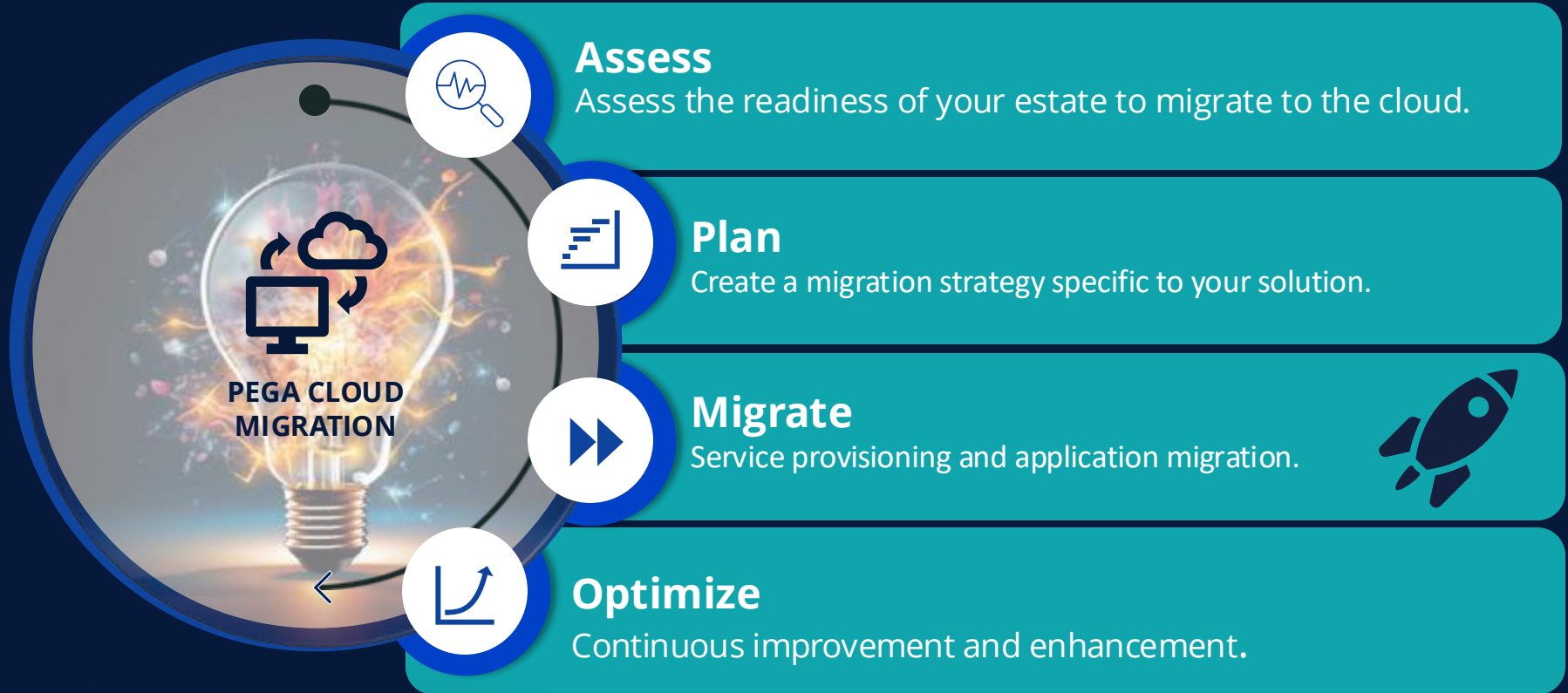
*Expanded infrastructure as code capabilities to improve operational efficiency and increase service reliability*



**Pega Cloud is a  
microservices  
architecture**




# Seamless Cloud Migration to Pega Cloud





If internet connectivity is not a primary  
**Pega Secure Connect**  
option for your business, then...

Strategize Your Hub/Spoke  
model for optimal results







# Pega Secure Connect



**AWS Direct Connect public virtual interface**



**Public connectivity using Cloud Exchange**



**AWS Private Link**

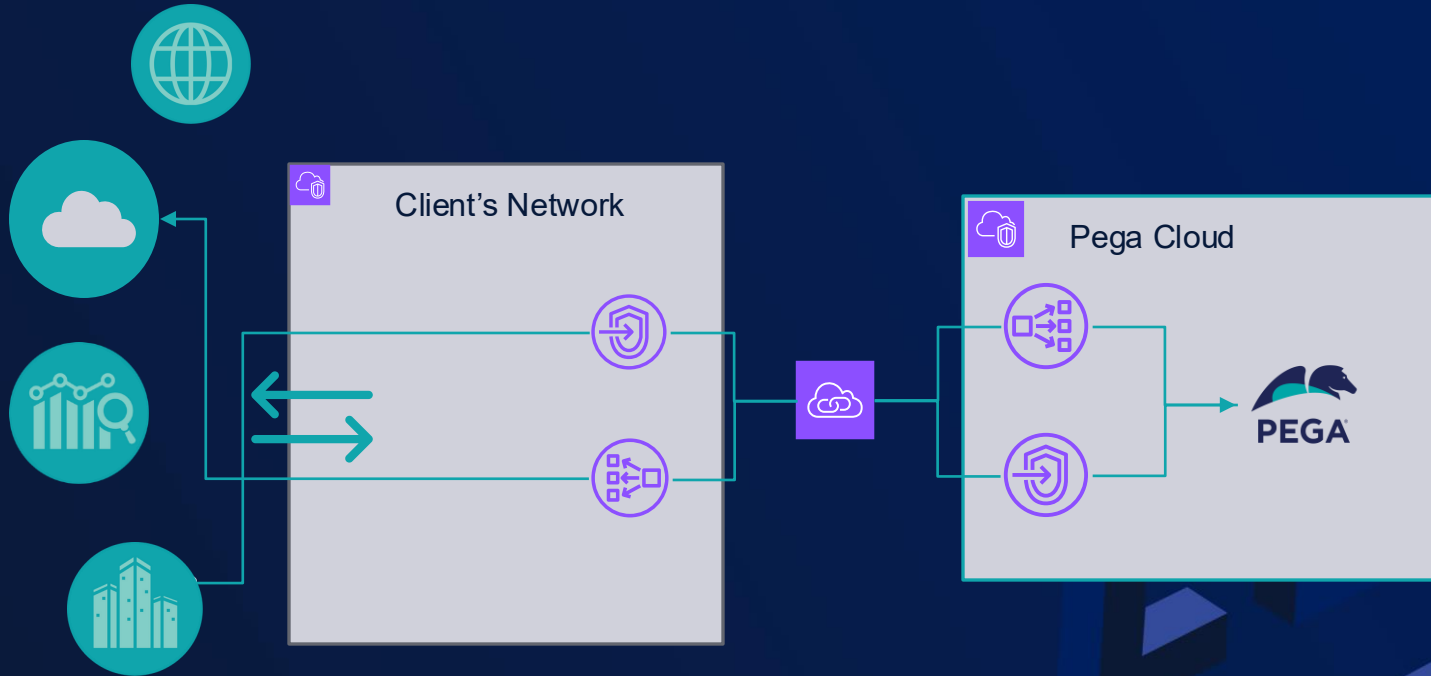


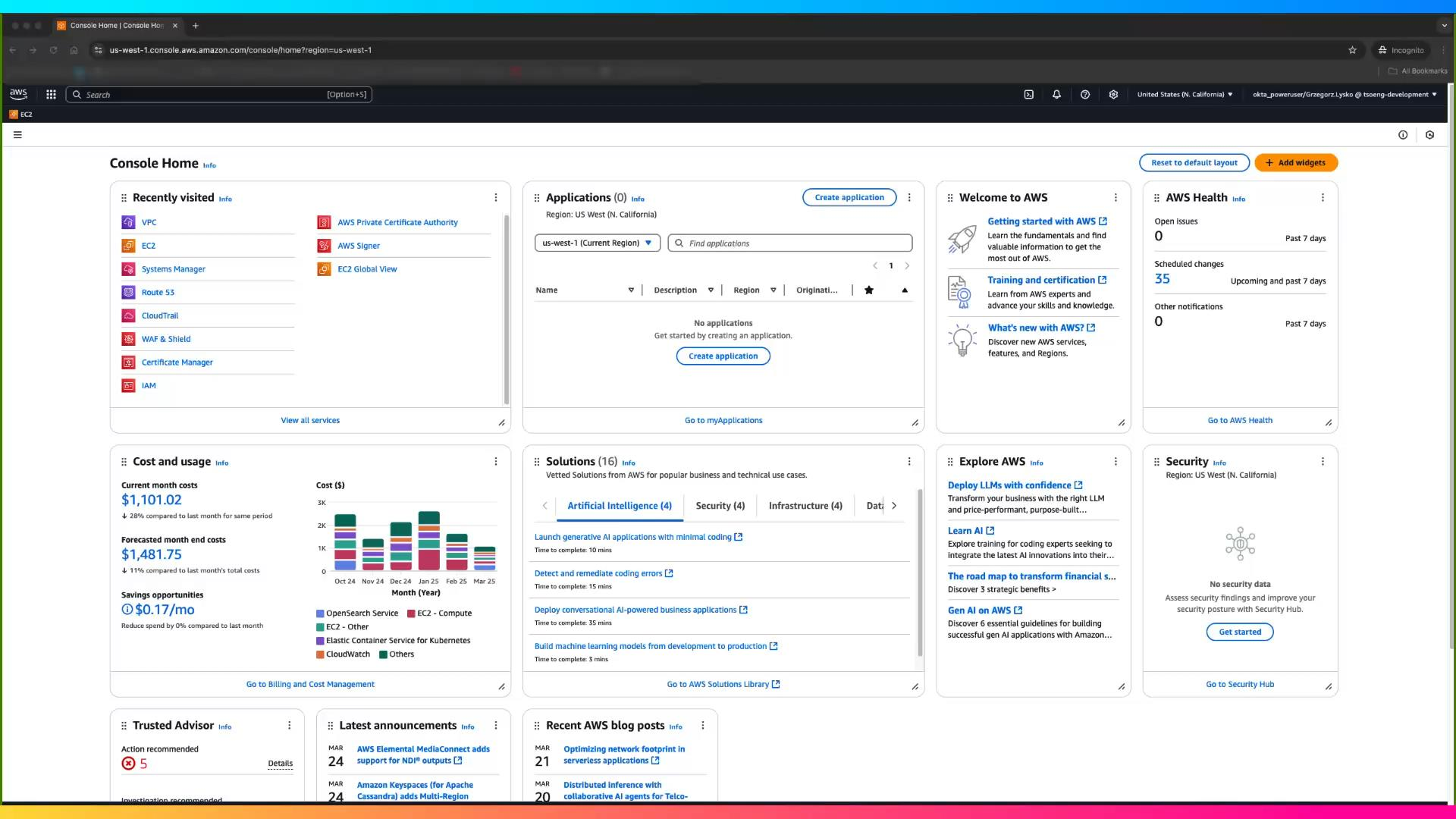
**GCP Private Service Connect**



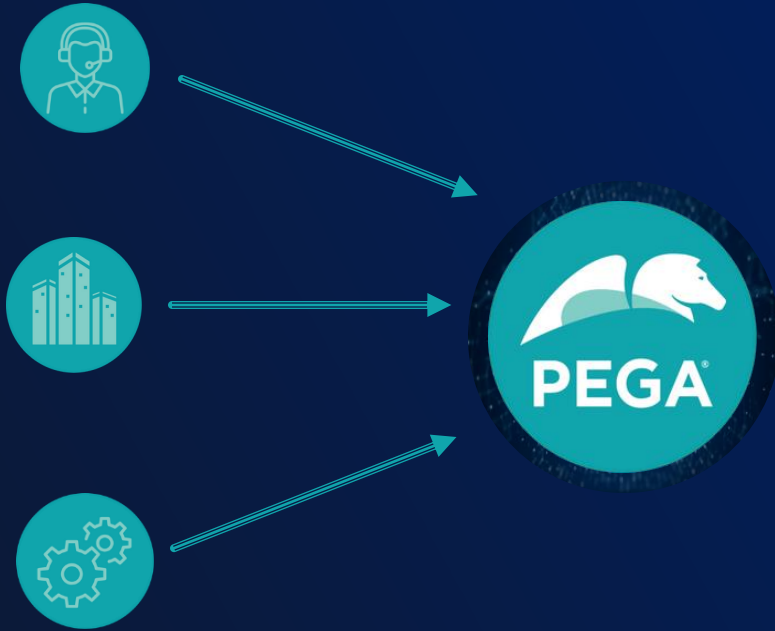
**Google Peering**

# Pega Secure Connect on AWS





# Client-Managed Inbound Access Control



**Strengthen the security posture  
of your application on Pega Cloud!**

## Default Denial of Inbound Connections

- All inbound connections are denied by default.

## Granular control

- Define Network Access Control for each environment. Control incoming traffic on the global level and for your application's specific subpaths!

## Self-service in My Pega Cloud

- Clients on Pega Cloud 3 can add and remove IP addresses as a self-service feature in My Pega Cloud.

# Static inbound IPs to Pega Cloud



**Manage the traffic that moves from your data center to Pega Cloud.**

- When you subscribe to Pega Cloud Advanced Networking, you can request static inbound IP addresses dedicated to your Pega Cloud environments.
- These IP addresses are shared across all your environments and help manage the traffic that moves from your data center to Pega Cloud.

# Client-Managed Outbound Access Control



Meet your organization's security and compliance needs with egress control.

## Granular Segmentation

- Control which integration services are accessible.

## Default Denial of Outbound Connections

- All outbound connections are denied by default.

## Data Exfiltration Protection

- Restrict access to only approved endpoints.



Sample Egress Network Policy  
for an environment

Port	DNS or IP based endpoint
9092	10.252.11.241
587	mail.pega.com
443	pega.com



# Client Success with Pega Secure Connect and Advanced Networking

Enhanced  
security and  
scalability

Simplified  
integration and  
connectivity  
through hub-  
and-spoke  
model

High  
bandwidth and  
reliability

Flexibility to  
support even  
most complex  
client use  
cases



**Connect, Migrate, Succeed!**

**Accelerate your Pega Cloud Journey  
with "Cloud Secure Connect"**

**Real-World Application**



# Migration to Pega Cloud with Pega Secure Connect

## Network & connectivity perspective

### Scenario Overview:

- Current Setup: Running the Pega Platform on your own.
- Integration: Utilizing a VPN for secure connections with third-party integrations.
- User Access: End users connect to the application on the Pega Platform via the internet using mobile devices.
- Future Goals: Aiming to expand and enhance the capabilities of your existing application.



# Migration to Pega Cloud with Pega Secure Connect



# Accelerate Innovation with Pega Cloud

Unlock the full  
power of **Pega**

Boost scalable  
network  
connectivity with  
Pega Secure  
Connect

Leverage Pega  
Cloud's Advanced  
Capabilities to  
Safeguard Your  
Applications



# PegaWorld

JUNE 1-3, 2025 | LAS VEGAS



PEGAWORLD.COM